

Welcome to the Village of West Harptree

On behalf of the Parish Council, the Village Hall committee and the Church Committee of St Mary's church we extend a warm welcome and invite you to join the many activities, events and support committees that make West Harptree a wonderful place to live, work and enjoy life. This welcome brochure provides basic information on the services, organizations, and activities in the village. The information is NOT intended as recommendations and it is suggested confirming information in advance. (Updated October, 2022)

Visit - www.westharptreehall.com for the schedule of events, exercise, clubs, entertainment & hall rental availability.

Emergency Services Contact Numbers:

Police/Fire/Rescue - 999 (Free Call) Text18001 (operator calls 999) know your postcode to assist the caller with locating you.

Call 999 **ONLY FOR URGENT MATTERS** such as home invasion. Powerline has fallen and there is a threat to life. Fire, major accident, major flooding

NHS/Ambulance - 111 For NON - URGENT emergency health care services 24 hours a day, 7 days a week (Free Call). If you need to go to A&E, the NHS will book an arrival time in advance. Or, you need advice or medical treatment quickly and can not wait for a doctor's appointment. Call for Emergency NHS Services for situations such as:

- Suffering signs of a heart attack
- Choking
- Severe Bleeding
- Miscarriage
- Diabetic Coma
- Seizure
- Extreme pain and nausea
- Loss of consciousness
- Severe burns
- Allergic reaction
- Drowning
- Severe headache and vomiting
- Stroke symptoms
- Coughing or vomiting blood

Non-Emergency local police 101,

Counter-Terrorist Hotline - 0800 789 321

Hospitals with 24 Hour A&E:

1. Bristol Royal Hospital for Children, Paul O’Gorman Building
Upper Moudin Street, Bristol, BS2 8BJ Tel: 0117 923 0000 13 miles/33 min
2. Bristol Royal Infirmary (BRI), Upper Moudin Street, Bristol B52 8BJ
Tel: 0117 923 000 13 miles/33 minutes
3. Southmead Hospital, Southmead Road, Westbury-on-Trym, Bristol, BS10 5NB
Tel: 0117 950 5050 16 miles/39 minutes
4. Bath Royal United (RUH) Hospital -Combe Park, Bath BA1 3NG Tel: 01225
428331 11.8 miles Open 09:00-17:00 www.ruh.nhs.uk

Minor Injuries

1. The Swallows - Paulton Memorial Hospital, Salisbury Road, Paulton, Bristol,
Avon BS39 7SB, 6 miles/20 minutes Tel: 01761 412 315 www.nhs.uk
2. Shepton Mallet Community Hospital, Bucklers Way, Old Wells Road, Shepton
Mallet, Somerset BA4 4PG Tel: 01749 342 931 14 miles/27 minutes
www.sompar.nhs.uk

Walk-in Centre

Glastonbury Surgery, Feversham LN, Glastonbury, Somerset BA6 9LP
Tel: 01458 833 666 (15 miles/27 minutes) www.glastonburysurgery.co.uk

Defibrillators - located on outside wall by front door of the Crown Pub, West Harptree; at the Blue Bowl Pub on the Bristol Road, and soon to be installed at the West Harptree Memorial Hall .

Medical Services - Local:

Harptree Surgery - located old Bristol Road, West Harptree, Tel 01761 221 406
Dispensary 221 791 www.harptree-camelysurgery.nhs.uk

Dentists - private service located adjacent to Harptree Surgery on Bristol Road
Tel: 01275 332 442 whdental@netcomuk.co.uk

NHS - The Vinery, Hartford Square, Chew Magna BS40 8RD Tel: 01275 332 371

Valley Orthodontists - 40 High St, Chew Magna BS 40 8PW Tel: 01275 333 322

Pharmacies -

1. Chew Pharmacy, 4 South Parade, Chew Magna, Somerset, BS40 8SH
Tel: 01275 333 885
2. Lloyds Pharmacy, Elm Hayes health Centre, Clandown Rd, Paulton BS39 7SF
Tel:01761 412 146 www.lloydspharmacy.com (via A368 8.5 miles/20 min)
Email: lp0179@lloydspharmacy.co.uk

Emergency Contacts:

Electricity - Power Cut - Call 105 free of charge

Gas - National Gas Emergency Service 0800 111 999

Water - Bristol Water 0345 702 3797 Leaks 0800 801 011

Crime Stoppers -0800 555-111

Flooding - 0345 988 1188 Flood line 24 hr.

West Harptree Population and Area Statistics

The village population as of the 2016 census was 498 people. With some 25 new homes added since, the total population we believe is closer to 570 people. Located in the Bath and North East Somerset district (BANES), with 3,391 square km, and total population of approximately 100,000 people.

Churches:

United Parish - office is in the Village Hall of West Harptree Tel: 01761 221 239
email: whparishoffice@gmail.com Website: www.eastharptree.org/church

Sunday services are rotated and schedule details are on the notice board in front of the church and in the monthly Parish News.

Monthly Parish News - £7 year, Contact Gill Stobart, 221 239 to subscribe

St. Mary's - The Street, West Harptree, contact Elaine Avery 221 450 or Maggie Brain 221 391 for information on all church matters

St. Laurence's - East Harptree, contact Mary Cookson 221 854

St. Margaret's in Hinton Blewett, contact Graham Sage 452 653

Sacred Heart Roman Catholic - Chew Magna, Tel: 0117 964 6922
www.sacredheart-stpius-clifton.org Parish Office Tel: 0117 964 6922

Baptist - Chew Magna, Turnbridge Road,

Methodist - Chew Stoke

Councils and Committees:

Bath & Northeast Somerset Council, Guildhall High Street, Bath BA1 5AW
Tel: 01225 394 041 www.bathnes.gov.uk

West Harptree Parish Council - Contact: Jan Burdge Tel: 01761 221 307
Website for details on current planning requests submitted by village residents, and information on past meetings www.westharptreeparishcouncil.co.uk

West Harptree Memorial Hall - Compton Martin Road, BS40 6EB, Somerset, opened in 1925 to commemorate those who lost their lives during WW1 is a not-for-profit registered charity and the focal point of local community events.

The facility includes a ground floor room, with a small stage and fully equipped kitchen, seats about 80 people with multiple size rectangular tables. Also, a 1st floor meeting room.

Available for hire for clubs and private functions. Base charge £10 per hour. Cleaning Service £20 ph. Additional costs may apply.

Hall rental services include: Free WIFI. Large Screen with projector and surround sound. A full service licensed bar is available at additional cost.

Hall Rental Booking Applications and availability are on our website - www.westharptreehall.com/book

Committee Chair - Ginny Ireland, email veireland@btinternet.com

Building maintenance and improvements are supported by hire fees, special event fund raising such as Cinema Night, and the successful “100 Club”.

The “100 Club” - (Fund Raising) Participation is a monthly (12 months) subscription fee of £5 per month and provides the opportunity to participate in a monthly draw for prize money £100, £60, and £40 (3 winners pm) Contact- Bill Jory Tel: 01761 221 776

Cinema Nights are currently suspended while we search for a new committee member to help coordinate. Contact us if interested.

Helplines/Area Support Services:

Buddy’s Dog Rescue - See details at Bowden’s shop

Drink line - Tel: 0300 123 1110

Family Lives - Tel: 0808 800 222

Missing People (24 hr.)- Tel: 116 000

National domestic Violence Helpline (24 hr.) - Tel: 0808 2000 247

RSPCA (24 hr.) - Tel: 0300 1234 999

Samaritans (24 hr.) - Tel: 116 123

Victim Support line -Tel: 0808 1689 111

<https://livewell-bathnes.gov.uk> (new helpline)

Clubs, Activities, Events: (in West Harptree Memorial Hall) 2021

- See bookings on www.westharptreehall.com for current schedule)
- Picture Gallery on the last page

Adventurers - Hazel Rider Tel: 01761 221 700, Meet alternate Friday evenings 6:30-7:30 with crafts, games and outdoor activities for 7 to 11year old's.

Bridge - Fridays 1:30-4:30 PM, open to new members.

Contact Wendy Evans 01761 221 155 or wevans8@me.com

Brazilian Jiu Jitsu - Tuesdays & Thursdays 4:3-5:30 kids & 7:30-9:00 adults; Contact - bjjchewvalley@gmail.com

Cinema - Reel & Screen nights. (Currently suspended) Enjoy watching cinema favorites along with beverages and snacks from our bar. Adults £4, children £2

Circuit Training - Mondays 6pm (NEW)

Craft Market, Book Swap & Cafe (NEW) - Saturdays, 11am-2pm, see website for dates

Dance - (children) Scheduled during term times only Wednesdays, 4pm

Harptrees History Society - Lesley Ross Tel: 01761 221 758, Meets the last Wednesday of the month with guest speakers Sept to April

Luncheon club - Hazel Rider Tel: 01761 221 700, Join fellow seniors 60+ for fellowship and lunch provided by volunteers of the community. Meets the third Thursday of the month, Noon. A £4 charge for delicious homemade foods. Check the schedule section on www.westharptreehall.com.

Pilates - Emma Walker Tel: 07747 600 668, Mondays & Fridays 9 to 10 am , Contact www.emmawalkerpilates.co.uk

Westfest - Village Fete organized by the Village Hall committee includes fun games, food, competitions. Not scheduled for 2023

Women's Institute (of Harptrees) - Tel: 01761 221 505 currently not scheduled

Pubs, Restaurants & Accommodations:

Crown Inn - located in the heart of the village, in operation since the early 1800's. Check with the Pub for their food menu and for take-away foods. Entertainment includes Sky Sports, BT Sports, 3 Televisions. New Pool Room. Children and dogs welcome. Beer Garden behind pub

Tel: 01761 221 016 Crown Inn - Tel: 01761 222 432

Blue Bowl Inn - Pub, Restaurant and Bed & Breakfast, located on Bristol Road, Beer Garden & Children's Playground. Reopened Oct 15th, 2022 under new management. Renovations in process. Website under construction.

Tel: 01761 221 269 www.thebluebowl.co.uk

The Stable Tea Rooms - located on the road to Bath, just past the lake next to The New Manor Farm Shop, function room rental. Open 7 days a week. Tel: 01761 220 172

Wellsway - Former Somerset Cider House and Wayside Inn located on Harptree Hill, BS40 6EJ – *available for private hire only*. Weddings, conferences, meetings, parties, Contact Maxine Gibbons Tel: 01761 221 382 www.thewellsway.co.uk

Recreation:

Play Grounds are located just off the road to East Harptree and includes an equipped children's play area and grass field suitable for football. Bicycles, scooters, quad bikes and skate boards are NOT Allowed. PLEASE PICK UP AFTER YOUR DOG.

Boating/Sailing - available on Chew Valley Lake, Tel: 01275 332 194

Fishing - Licenses available at Chew Valley Lodge on Chew Valley Lake, Chew Stoke

Golf & Health Club - Farrington Park, Farrington Gurney Tel: 01761 451 596

Refuse & Recycling:

West Harptree is part of the BANES (Bath and Northeast Somerset) Council from where you can order refuse and recycling bins. Their website, www.bathnes.gov.uk provides bin ordering and recycling details and the latest schedule for pick up. Generally:

- Street side Recycling (small green bins for glass, plastic, tins), paper and cardboard in a blue bag is collected every Wednesday
- Household garbage every other Wednesday, placed in black wheelie bin
- Garden Refuse, in a green wheelie bin (pay £46 annually for this service) alternates every other Wednesday (Service is suspended in the winter)

Recycling Centre for large items, closest drive up location is in Midsomer Norton. MUST register in advance at www.bathnes.gov.uk located Old Welton, Wheelers Hill

(off Radstock A362) BA3 2AA about 10 miles. Open: Mon-Fri 8 - 4:15, Sat 9 - 3:45, Sun 9 - 1, Bank Holidays 8 - 3:45 Closed Christmas, Boxing Day, New Year's Day

Schools:

Area State Schools - details at

www.bathnes.gov.uk/services/schools-colleges-and-learning

East Harptree Nursery, Pre School & Primary, Middle Street

Pre-School - Primary - Jane Bailey 01761 221 492

Montessori Kindergarten - Ages 2-5 years, located in Hinton Blewett. Visit

www.montessorihintonblewett.co.uk Tel: 01761 241 416 Operates 37 weeks during term times only.

Nursery - At the New Manor Farm Shop, North Widcombe, West Harptree BS40 6HP caring for children 4 months to 5 years, Monday to Friday, 7 AM - 6 PM, 51 weeks of the year. Contact Rosie @ 07305 081 458 www.thenurseryatnewmanor.co.uk

Transportation:

Bristol Airport - 0871 334 44 44, www.bristolairport.co.uk (lists all the airlines)

Bus Service

1. To Bristol - Bus 372 from bus stop by the Crown Pub to Chew Magna, Dundry, Highridge, Temple Meads (GWR rail service 1 hour) and Bristol Horsefair. Timetable: Monday - Saturday 07:02, 09:38, 12:28 Last return 18:10 arrive 19:20. See timetable at bus stop for latest schedule or call 0117 941 3713
2. Bristol Community Transport website www.bristolcommunitytransport.org.uk
3. National Express 0871 781 8181, nationalexpress.com (Bath or Bristol to Heathrow & Gatwick Airports)

Taxi -

1. Arrow Cars is the official Private Hire company for Bristol Airport Tel: 01275 475 000 or www.arrowprivatehire.co.uk Book both ways and save money
2. Chew Cars Tel: 01275 405 947

Retail Services:

Bowden's - Located in the heart of West Harptree, the shop has been operating since at least 1861 under multiple ownerships and since 1964 by the Bowden family. The building itself dates prior to 1830. The shop serves the community, fresh bakery items, fresh baked pasties and a variety of fresh sandwiches. The shop offers an excellent variety of deli foods, frozen foods, pantry items, and as an off -license store there is a wide selection of alcohol. Licensed for Lotteries.

Open Monday - Saturday, 7AM to 7:30 PM, Sunday 8AM to 4PM, except holidays

Fuel - the closest station is Ubley Motor Services, about 4 miles, just past Compton Martin. Also, at the SPAR in Winford, about 5 miles. A 24 hour Exxon station is on the Bristol Road about 2 miles south of Bristol Airport towards Bristol or at the Tesco store by Farrington Gurney.

Garden Plants - available seasonally outside Old Rosecroft Farm on the Street Road. Sales benefit the maintenance of St. Mary's church. Donations of plants for sale gratefully appreciated.

Home Food Delivery - is offered by most chain stores.

Post stamps available inside the West Harptree Boden's Shop. A postbox is outside the shop with pick up usually twice a day during the week and once on Saturday. Services include Post Office Card Account; Cash Deposits & Withdrawals with a chip card and pin; Postal orders; money grams; electronic bill payments; e top-up; pre-order travel money; and Euros.

New Manor Farm Shop & Stable Tea Rooms - located in North Widcombe, West Harptree, BS40 6HP, on the road to Bath, just past the lake. Organic and locally reared meats, fresh fruits and vegetables, local crafts and much, much more!
Farm Shop - Tel: 01761 220 067

Mendip Valley Antiques & Collectables (at New Manor Farm Shop) -Tel: 0796 638 7252

Televisions/Cable Service - Tony Hucker TV, Chew Stoke Tel: 01275 332 888

White Rose - Beauty Rooms - offering Facials, Manicures and Tanning -
Tel: 01761 221 240 conveniently located next to Bodens in the heart of West Harptree. Please call in advance for appointments.

Bath & North East Somerset Libraries:

Tell your friends and family to join Bath and North East Somerset Libraries online for free by sharing this link: <https://www.librarieswest.org.uk/join> - a membership number will be generated to enable access to free e Books, e audio books, e magazines, e comics.

Visiting Mobile Library:

West Harptree is on Route 1 and is serviced with a 30 minute visit, by the bus stop, every other Wednesday 10:40 to 11:10 am. No service on Holiday's.

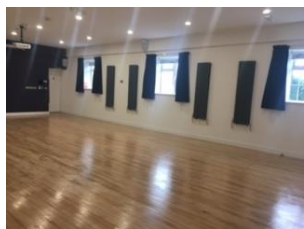
Check the website for the schedule www.bathnes.gov.uk/mobile_service_timetable or call 0797 722 8201



Please contact the West Harptree Memorial Village Hall committee for updates and suggestions to be included in this Welcome Service information. Thanks for choosing to live in beautiful West Harptree. We look forward to meeting you at one of our community events and activities.

West Harptree Village Memorial Hall - renovated with support from grants from the National Lottery Commission; Bathness.gov.uk; and Diageo.

Picture Gallery:



Welcome Information – West Harptree



First Floor - (not pictured) Seating to 40 people, with small beverage service station. Audio/Visual installed.